



PRODUCT TECHNICAL SHEET

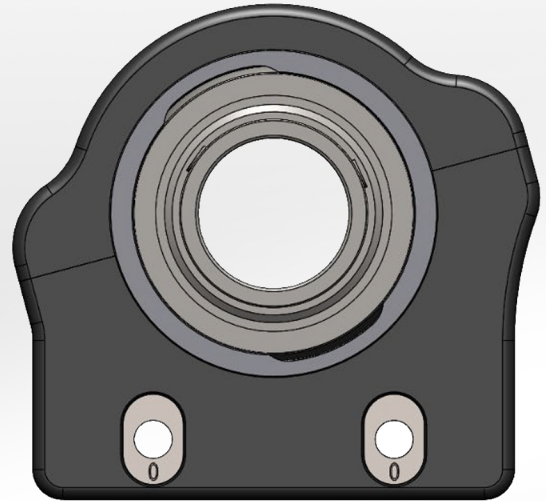
ADJUSTABLE RIDE HEIGHT, RAKE, AND CROSSWEIGHT CASSETTE

Optional upgrade component

Phantom also offers the same style cassette designed with interchangeable ride height slugs/pills. This is an upgrade option. These slugs are not to be used for fine tuning purposes, as these slugs will significantly change the handling of your chassis and we recommend not changing them on a regular basis.

The cassettes are designed so that you may use the slugs to increase or decrease the amount of crossweight and/or rake in your chassis simply by raising or lowering the ride height. "Rake" is the ride height difference between left and right side frame rails.

In order to fully utilize this new feature, please understand that this adjustment is meant to only be used when you are setting a baseline setup for your chassis. These changes will drastically influence the amount of crossweight in the chassis, along with how the chassis loads and unloads due to the change in ride heights and rake. The amount of crossweight that changes when the pill is adjusted is dependent on several factors. These factors include the seat positioning, driver size, stagger, and your wheel hub settings. You can expect that with each incremental change, 3 to 5% of cross weight will be changed. We currently have three pills available: 0", 1/16", and 1/8".



We recommend that if you do choose to make this adjustment, that you only move one increment at a time. If you want to increase your cross weight/decrease rake, place the pill into the LR cassette with the numbers facing downward. If you want to decrease your crossweight/increase rake, place the pill into the LR cassette so that the numbers are upward. The RR will be opposite... if you want to increase your cross weight/decrease rake, place the pill into the RR cassette with the numbers facing upward. If you want to decrease your crossweight/increase rake, place the pill into the RR cassette so that the numbers are downward.

Please keep in mind, this is not a fine tuning adjustment and should only be used when significant changes are desired!