



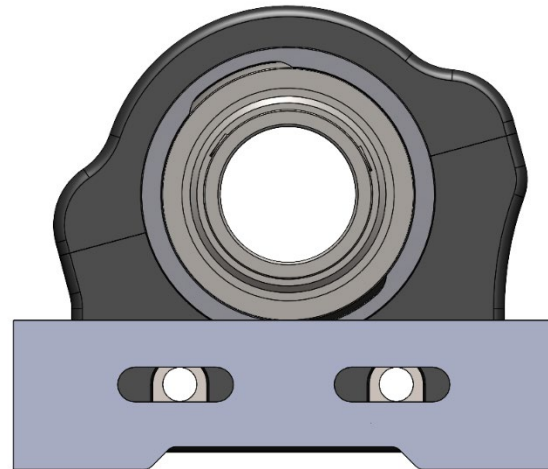
*Phantom Racing Chassis*

4010 Hwy. 152 West - China Grove, NC 28023 - 704-855-3165

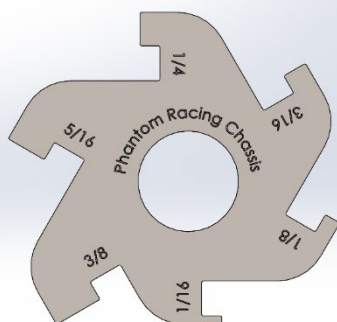
## Adjustable Wheelbase Rear Cassettes

Adjustable wheelbase cassette hangers allow finite adjustment of your wheelbase both forward and back. These hangers were introduced by Phantom in 2023 and come standard on all outlaw wing karts and Tricon chassis.

By moving both cassettes forward the wheelbase will be shortened. This will cause the kart to turn sharper, and bite harder to navigate a tighter, smaller corner. Not only can you adjust both cassettes equally, but you can also adjust either side independently, whereas one side is shorter than the other effectively “skewing” the axle in the kart.



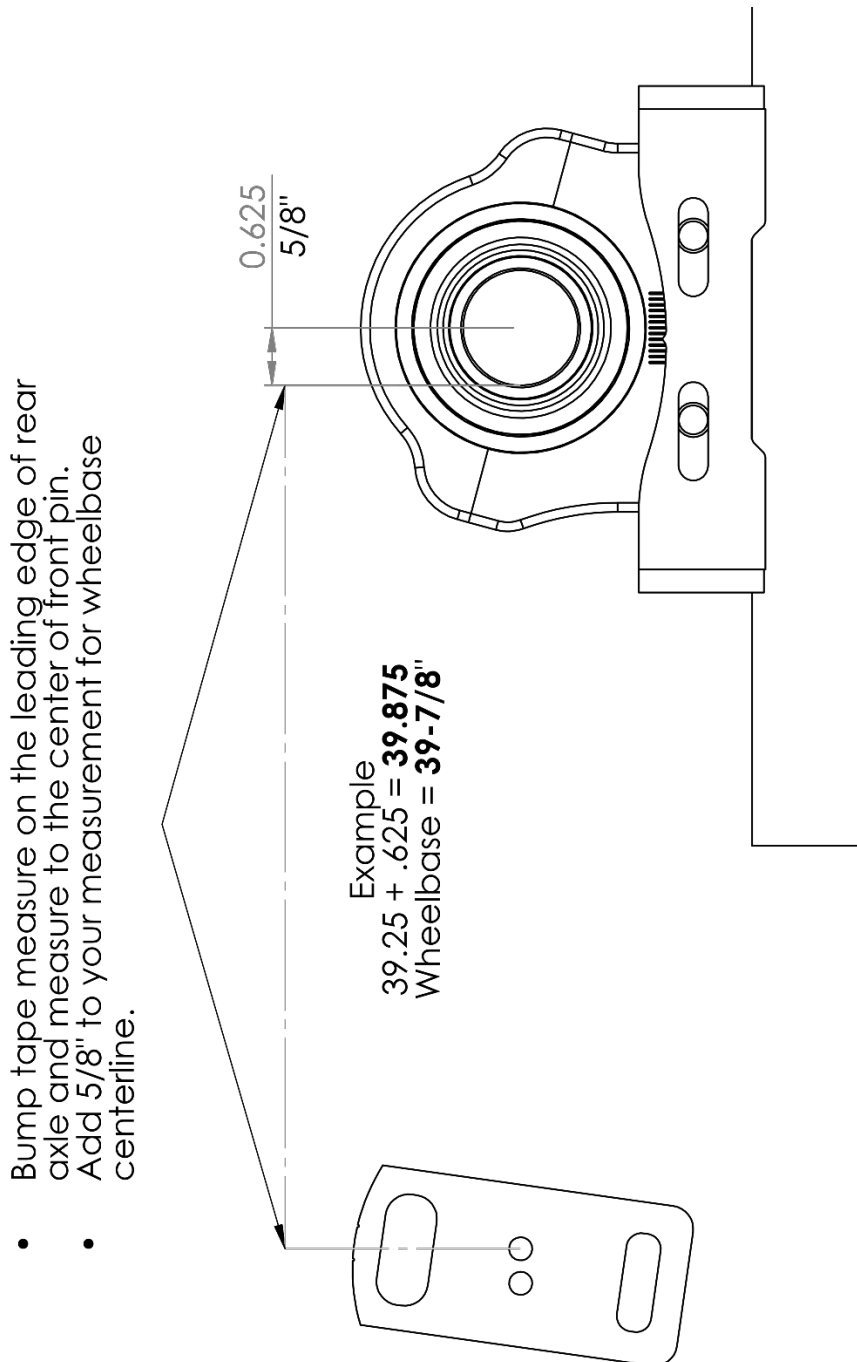
Your kart will normally travel in the direction of the axle. Therefore, if you move the right-side cassette forward (and/or left-side back) you will shorten the right-side wheelbase (or lengthen the left-side). This will skew the axle left in the chassis. So, the kart will turn freer, with less effort. On the contrary, if you move the LR forward (and/or RR back) the left-side wheelbase will be shortened (or right side lengthened) and the axle will be skewed to the right. This will tighten the kart. So, just remember... shorter right-side wheelbase=freer, and shorter left-side wheelbase=tighter.



In order to adjust the wheelbase on either side, first loosen the 5/16” jam nuts found on the front and rear of the cassette hanger. Then, loosen the 5/16” socket head bolts that hold the cassette in place. Loosen these bolts enough to allow movement of the cassette, you do not need to remove them. Next, loosen the 5/16” hex bolts & lock nuts that hold the cassette in the hanger. Again, you

do not need to completely remove these bolts. Now, measure the distance from the rear of the cassette to the inside edge of the hanger using PRC's star gauge (PN 1115616S), tape measure, calipers, etc. Stock position is 1/8" on both sides. You can move either side according to your desired needs.

*Please remember to check with the chassis rules & regulations in place for your track or series. This cassette design has the capability of shortening the wheelbase past the legal limits for some sanctioning bodies. Wheelbase is measured from the centerline of the kingpin to the centerline of the axle.*



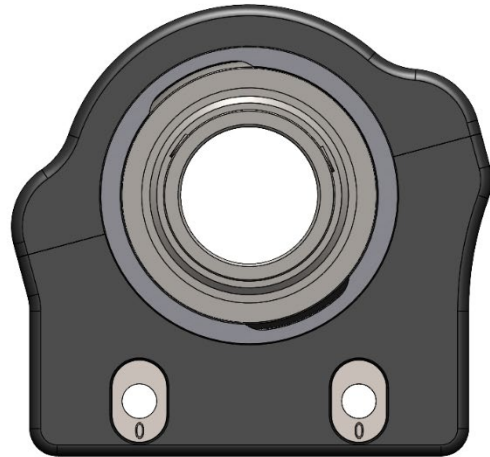
## Ride Height, Rake, & Cross Adjustment

### *Optional upgrade*

Phantom also offers the same style cassette designed with interchangeable ride height slugs/pills. This is an upgrade option. These slugs are not to be used for fine tuning purposes, as these slugs will significantly change the handling of your chassis and we recommend not changing them on a regular basis.

The cassettes are designed so that you may use the slugs to increase or decrease the amount of cross weight and/or rake in your chassis simply by raising or lowering the ride height. "Rake" is the height difference between left and right side frame rails.

In order to fully utilize this new feature, please understand that this adjustment is meant to only be used when you are setting a baseline setup for your chassis. These changes will drastically influence the amount of cross weight the chassis will have, along with how the chassis loads and unloads due to the change in ride heights and rake. The amount of cross weight that will change when the pill is adjusted is dependent on several factors. These factors include the



seat positioning, driver size, stagger, and your wheel hub settings. You can expect that with each incremental change, 3 to 5% of cross weight will be changed. We currently have three pills available: 0", 1/16" and 1/8".

We recommend that if you do choose to make this adjustment, that you only move one increment at a time. If you want to increase your cross weight/decrease rake, place the pill into the LR cassette with the numbers facing downward. If you want to decrease your crossweight/increase rake, place the pill into the LR cassette so that the numbers are upward. The RR will be opposite... If you want to increase your cross weight/decrease rake, place the pill into the RR cassette with the numbers facing upward. If you want to decrease your crossweight/increase rake, place the pill into the RR cassette so that the numbers are downward.

*Please keep in mind, this is not a fine tuning adjustment and should only be used when significant changes are desired!*